

About

The about screen will be unique to each profile. Generally, this provides creative credits and legal attribution.

These buttons allow you to add (and remove) custom keystroke assignments. Use them to assign media clips to a specific key or key combination.

Use this to create application-specific media clip assignments. For instance, if you have a single application to which you would like to have unique sound assignment that differ from all other application sounds, you would use this feature. Clicking "Add" will allow you to browse to select the desired application. Once it is added, it will show up in the drop down application list. Notice that the events in the drop down event list now display events that are applicable only to a specific application, omitting for example, the Start Windows or Shutdown events which would be global.

This window only displays clips which have been assigned to a specific event. To assign additional clips to the event, drag them over from the left hand file view column. To delete a clip, select it in the right hand assignment column by clicking it, then press the delete key.

This window displays available media clips, in much the same manner as the Browser. You may audition clips by double clicking them, and any desired clip can instantly be assigned by dragging it over to the right hand event window.

Browser

The browser appears very similar to the standard Windows file management tools like Explorer, and operates similarly. On the left column you may select drives, directories or files. Personal Desktop only displays file types that it recognizes, so other file types will be "filtered" out of the view to avoid clutter and confusion. If you see a file you're interested in auditioning, double click it. Click again to end the preview. If you want to install that file onto the hard drive, just drag it over to the right column. Personal Desktop will automatically determine the file type and put it in the appropriate media directory.

Contents

[Installing the B5 Arcade Entertainment Utility](#)
[Uninstalling the B5 Arcade Entertainment Utility](#)
[Personal Desktop Deluxe](#)
[Shadow Wars Arcade Game](#)
[Tech Support](#)
[Legal](#)

Babylon 5: Shadow Wars

Introduction

Your squadron has gone on patrol without you, leaving you to watch over things. Bad idea. The Shadows and their minions see an easy target, and you don't get a moment's peace. They want Babylon 5, and they want it bad. Only you stand between Babylon 5 Station and the Shadow forces as its sole defender.

Game Play

Your ship can move up, down, left and right. You control it using the arrow keys. Pressing the space bar fires your guns. If you hold down the spacebar, your ship's guns will go into continuous fire mode. Your shield strength is represented by the blue energy bar at the top of the screen. Babylon 5's shield strength is shown by the green one directly under it. Your ship can take a few hits before it gets suddenly converted into a rapidly expanding plasma cloud. Your shields will regenerate if you manage to evade enemy fire long enough. I wouldn't advise spending too much time ducking fire - if you're doing that, chances are good that Babylon 5 is taking your lumps for you, and its shields *don't* regenerate like yours do.

Eventually the Station Commander will realize that you need some help against the Shadows. You can earn new ships to replace the ones the Shadows destroy. If you do well enough, you will earn the right to fly White Star class vessels into combat. These have substantially better firepower and shields, and are the only thing strong enough to take out a Shadow Cruiser.

Full Screen Mode

Windows 95 users can press the 'F' key to toggle full screen mode on and off. When full screen mode is off, Shadow Wars will run in a window just like any other Windows 95 application.

This game will run in a window on Microsoft Windows 3.1 and Microsoft Windows for Workgroups 3.11 if the screen resolution is higher than 640x480.

The Boss Key

Pressing the 'B' key will minimize the game. In Microsoft Windows 3.1 or Microsoft Windows for Workgroups 3.11 you can double-click on the minimized game icon to bring the game back up to continue playing. In Microsoft Windows 95, just click on the minimized game on your tool bar to restore it. While minimized, the game will pause and wait for you to come back to it.

Hardware Requirements

BABYLON 5: SHADOW WARS will run on as little as a 486DX/66 with 8M RAM, running Microsoft Windows 3.1 or greater. The game runs best at a screen resolution of 640x480, but will run at higher resolutions if you need it to do so. A Soundblaster-compatible audio card is recommended for best game play but is not essential. Control is exclusively via arrow keys and space bar on the keyboard. Installation requires approximately 5 megabytes of space on your hard disk. The game cannot be run from floppies.

Cursors

This tab allows you to easily assign customized cursors. Locate the appropriate cursor directory in the left hand file column. You can easily view the cursors by clicking them. To assign, just drag the desired cursor to the right hand column, over the cursor you want to replace.

Remember - if you get carried away, you can always revert back to the default cursors by clicking an assignment (in the right hand column) and pressing the delete key!

The default for Enable is checked. This function is used to selectively disable or enable specific Windows events that you want media clips attached to. An audio assignment for any event which is not enabled will not be active.

This drop down list displays the Windows events to which media clips may be assigned. Each individual event can have it's own unique assignments.

Icons

In Windows 95, this part of Personal Desktop deluxe allows you to easily assign custom icons to your normal desktop icons. Clicking on any icon file will display the icon at the bottom of the screen. To assign an icon, just drag it from the left hand column over to the desired icon on the right. The change should take effect immediately. To return an icon to it's default assignment, click the icon on the right hand column and press the delete key.

Although this is the only way to assign icons from within Personal Desktop Deluxe, you can substitute custom icons for other application icons also:

Win 95 -

1. Right click an application and select Properties.
2. In the application properties window, you should see a Program tab. Select it.
3. At the bottom of the window, select the Change Icon button.
4. Initially you will probably see Windows default icons.
5. In the "Change Icon window, the icon will be displayed. Make sure it's selected and click OK.
6. Close the Application Properties window - it should now display the new icon

Windows 3.1X

The Windows 3.1X version of Personal Desktop Deluxe doesn't have the ability to change icons, but don't worry - you can still use custom icons! Here's how:

1. From Program Manager, open up a program group and click on the application icon you want to change.
2. Press the Alt and Enter keys simultaneously to get a program item properties window.
3. Click the Change Icon button
4. Click the Browse button and locate the Personal Desktop Cursor directory. Select the desired icon by highlighting it, then click "OK."
5. In the Change Icon window, click OK.
6. In the Program Item Properties window, click OK again to finalize.

Installing the B5 Arcade Entertainment Utility

The B5 Entertainment Utility will allow you to customize your PC with customized icons, cursors, desktop wallpaper, audioclips and screensaver - all based on your favorite television series!

After running the INSTALL.EXE, you will be given a choice of installations:

Default installs a broad selection of each of the file type, but does not install everything. Remember - the CD contains a lot of information and depending on the amount of hard drive space you have, you may want to install or change files later. Personal Desktop Deluxe provides a browsing and file management tool to make this very easy.

Minimal installs only a few of each of the file types in order to conserve hard drive space.

Custom allows the installation of all files by category. From here you can install *everything* if you have sufficient hard drive space

Unless you choose the custom install and select all categories, only a limited selection of images and sounds will be installed initially, and the CD contains many more sounds and screen saver images which can be installed any time you desire.

The CD-ROM is used as a storage medium only, and is not needed for the actual operation of the sounds or screen saver images.

Window 3.1x notes

Setup does not automatically install Video for Windows or Win32s on your system. Instead, it will create program items in your B5 directory for you to manually launch the Video for Windows installer, or the Win32s installer. If you experience any difficulties playing video files in Windows 3.1x, run the Video for Windows installer. Win32s is only necessary if you are running Windows3.1.

These files will be necessary to play the Shadow Wars Arcade game.

Legal

Software License Agreement:

Sound Source Interactive (hereinafter referred to as SSI) warrants the diskettes and/or compact disc on which the Software and fonts are recorded to be free from defects in materials and workmanship under normal use for a period of ninety (90) days from the date of purchase as evidenced by copy of the receipt. SSI's entire liability and your exclusive remedy will be replacement of the diskettes and/or compact disc not meeting SSI's limited warranty and which is returned to SSI or an SSI authorized representative with a copy of the receipt. SSI will have no responsibility to replace a disk/disc damaged by accident, abuse or misapplication. ANY IMPLIED WARRANTIES ON THE DISKETTES AND/OR COMPACT DISC, INCLUDING THE IMPLIED WARRANTIES OF MERCHANTABILITY AND FITNESS FOR A PARTICULAR PURPOSE, ARE LIMITED IN DURATION TO NINETY (90) DAYS FROM THE DATE OF DELIVERY. THIS WARRANTY GIVES YOU SPECIFIC LEGAL RIGHTS, AND YOU MAY ALSO HAVE OTHER RIGHTS WHICH VARY BY JURISDICTION.

Disclaimer of Warranty on Software:

You, the purchaser of this software (end-user), expressly acknowledge and agree that use of the Software and fonts is at your sole risk. The Software, related documentation and fonts are provided "AS IS" and without warranty of any kind and SSI and SSI's licensor(s) (for the purposes of provisions shall be collectively referred to as SSI.) EXPRESSLY DISCLAIM ALL WARRANTIES, EXPRESSED OR IMPLIED, INCLUDING, BUT NOT LIMITED TO, THE IMPLIED WARRANTIES OF MERCHANTABILITY AND FITNESS FOR A PARTICULAR PURPOSE. SSI DOES NOT WARRANT THAT THE FUNCTIONS CONTAINED IN THE SOFTWARE WILL MEET YOUR REQUIREMENTS, OR THAT THE OPERATION OF THE SOFTWARE WILL BE UNINTERRUPTED OR ERROR-FREE, OR THAT DEFECTS IN THE SOFTWARE AND THE FONTS WILL BE CORRECTED. FURTHERMORE, SSI DOES NOT WARRANT OR MAKE ANY REPRESENTATIONS REGARDING THE USE OR THE RESULTS OF THE USE OF THE SOFTWARE AND FONTS OR RELATED DOCUMENTATION IN TERMS OF THEIR CORRECTNESS, ACCURACY, RELIABILITY OR OTHERWISE. NO ORAL OR WRITTEN INFORMATION OR ADVICE GIVEN BY SSI OR AN SSI AUTHORIZED REPRESENTATIVE SHALL CREATE A WARRANTY OR IN ANY WAY INCREASE THE SCOPE OF THIS WARRANTY. SHOULD THE SOFTWARE PROVE DEFECTIVE, YOU (AND NOT SSI OR A SSI AUTHORIZED REPRESENTATIVE) ASSUME THE ENTIRE COST OF ALL NECESSARY SERVICING, REPAIR OR CORRECTION.. SOME JURISDICTIONS DO NOT ALLOW THE EXCLUSION OF IMPLIED WARRANTIES, SO THE ABOVE EXCLUSION MAY NOT APPLY TO YOU.

Limitation of Liability:

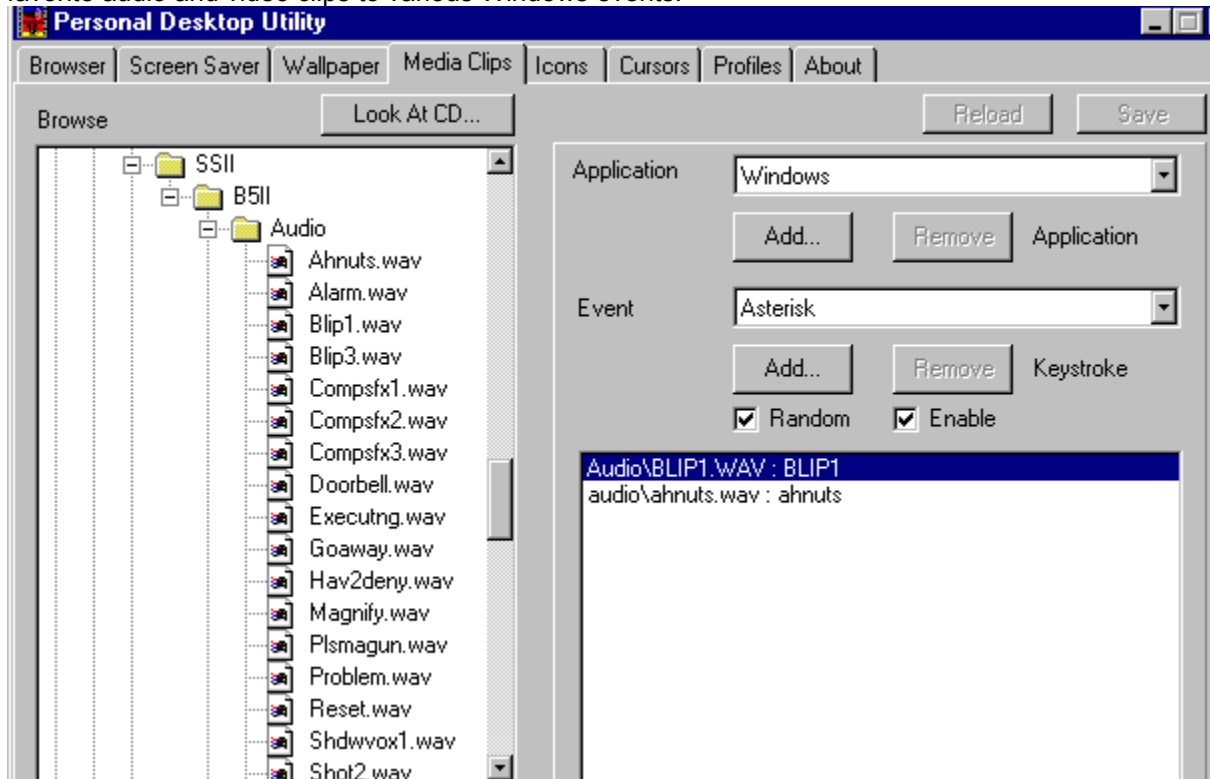
UNDER NO CIRCUMSTANCES INCLUDING NEGLIGENCE, SHALL SSI BE LIABLE FOR ANY INCIDENTAL, SPECIAL OR CONSEQUENTIAL DAMAGES THAT RESULT FROM THE USE OR INABILITY TO USE THE SOFTWARE OR RELATED DOCUMENTATION, EVEN IF SSI OR AN SSI AUTHORIZED REPRESENTATIVE HAS BEEN ADVISED OF THE POSSIBILITY OF SUCH DAMAGES. SOME JURISDICTIONS DO NOT ALLOW THE LIMITATION OR EXCLUSION OF LIABILITY FOR INCIDENTAL OR CONSEQUENTIAL DAMAGES SO THE ABOVE LIMITATION OR EXCLUSION MAY NOT APPLY TO YOU.

In event shall SSI's total liability to you for all damages, losses, and causes of action (whether in contract, tort (including negligence) or otherwise) exceed the amount paid by you for the Software and fonts.

If you have the correct CD-ROM in the drive, you can click this button to view files and directories on the CD immediately. "Dragging and Dropping" media clips from the left hand CD view column to the right hand sound list will physically copy the files from the CD to the appropriate HD directory, and assign them to the currently listed event. This simplifies file management and prevents you from assigning sounds on a CD that might not be present later, when the media clip is activated.

Media Clips

Media Clips are a powerful and fun feature of Personal Desktop. This function allows you to "attach" your favorite audio and video clips to various Windows events.



Media directories

Personal Desktop Deluxe uses four separate directories for media storage:

Audio - for .WAV audioclip files

Cursor - for custom cursors

Icons - for custom icons

Saver - for video and image screensaver files

Wallpaper - for bmp files displayed on the desktop background.

If you use the browser within Personal Desktop Deluxe to transfer files from the CD-ROM to your hard drive, files will be copied automatically to the appropriate directory.

Personal Desktop Deluxe

Personal Desktop Deluxe is a "Desktop Customization" utility designed to make it easy and fun to personalize your computer. It allows you to add and configure customized sounds, images, cursors, icons and screensavers. It's powerful yet easy to use.

Personal Desktop Deluxe consists of a series of tabbed pages, each corresponding to a specific function.

[Browser](#)

[Screen Saver](#)

[Wallpaper](#)

[Media Clips](#)

[Icons](#) (Windows 95 only)

[Cursors](#)

[Profiles](#)

[About](#)

Profiles

Profiles work similarly to Microsoft Desktop Themes. You may save or create new profiles if you like, and change them instantly by selecting a new Profile from the drop down list in the profiles tab. If you purchase additional Entertainment Utilities with Personal Desktop Deluxe, each will install a new profile. If you have older versions of Personal Desktop, you may create new custom Profiles using your earlier media clips, wallpaper and screensavers. (Personal Desktop is backwards compatible with the old files, but it will not read your old Personal Desktop configuration.)

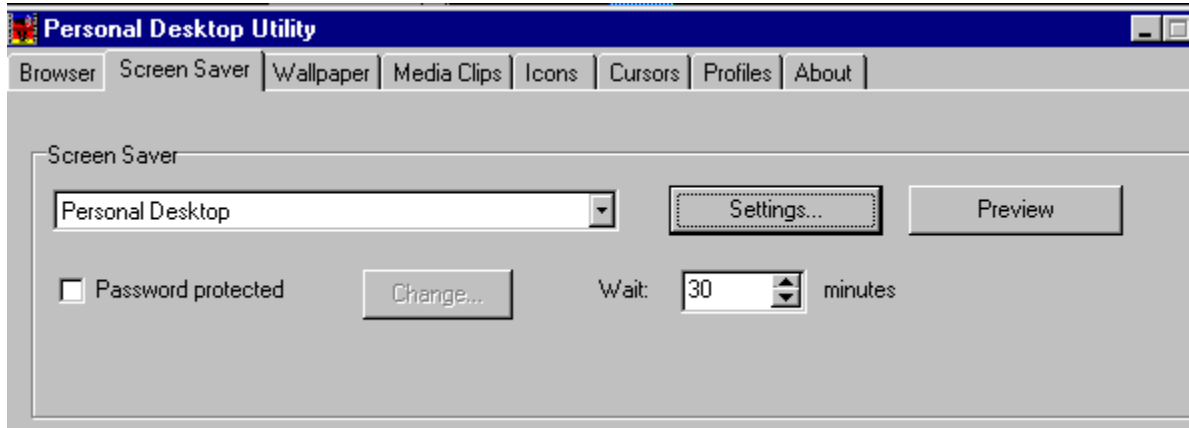
This button sets the media clips to play back in random order. If this button is not set, media clips will iterate sequentially through the list as they are triggered by successive events. In no case is more than one clip per event triggered.

This button reloads previous settings

This button allows you to save your current Media Clip settings, if you have made changes that you want to keep.

Screen Saver

The Screen Saver tab allows you to select any Windows screen saver. Select "Personal Desktop" in the screensaver list to activate the Personal Desktop screensaver.



This allows a user to set a password which must then be entered to quit a screen saver. The computer will prompt you for the password if you try to exit the screen saver. If an incorrect password (or no password) is entered, the screen saver will resume operation, disallowing access to the Windows Desktop. This provides security and privacy for your computer when you are away from it.

The **Change** button allows you to change your password.

Passwords are global, so whatever password you set for any .SCR file becomes the password for all .SCR files with the Password Protected option box checked.

Screensaver Settings

Sound Options

Sounds are a lot of fun, and really enhance the impact of a screen saver, but they can sometimes become intrusive.

The "Full Sound" option gives you all sounds continuously, throughout the operation of the screen saver.

The "Limited Sound" option plays the sounds for a couple of iterations (a minute or two) for the screen saver, then goes silent for the rest of the duration.

The "No Sound" option mutes the screen saver entirely.

Display Options

1. Delay

This sets the length of time each still image is displayed on the screen.

2. Transition

This option selects one of the several transition effects between images. Choices include Random, Block Fade, Horizontal Blind, Vertical Blind, Horizontal Wipe, Vertical Wipe, Circular Wipe and Pixel Fade. The Random selection will cycle a different "fade style" for each image.

Use the up/down arrows to scroll to desired setting (in minutes) or type in a number. This sets the amount of "inactivity" time that must go by without a keyboard event before the screensaver starts.

Clicking the right hand arrow will display a drop down list of all available screensavers. Select "Personal Desktop", or any of your other Windows Screensavers.

Click this button to preview selected screensavers. Pressing any key or moving the mouse will cancel the screensaver preview and return to the desktop.

Shadow Wars Arcade Game

note: Please disable Personal Desktop (by closing it) when running Shadow Wars to avoid audio conflicts. If you run Shadow Wars while Personal Desktop is running, game audio may be deactivated!

Introduction

Your squadron has gone on patrol without you, leaving you to watch over things. Bad idea. The Shadows and their minions see an easy target, and you don't get a moment's peace. They want Babylon 5, and they want it bad. Only you stand between Babylon 5 Station and the Shadow forces as its sole defender.

Game Play

Your ship can move up, down, left and right. You control it using the arrow keys. Pressing the space bar fires your guns. If you hold down the spacebar, your ship's guns will go into continuous fire mode. Your shield strength is represented by the blue energy bar at the top of the screen. Babylon 5's shield strength is shown by the green one directly under it. Your ship can take a few hits before it gets suddenly converted into a rapidly expanding plasma cloud. Your shields will regenerate if you manage to evade enemy fire long enough. I wouldn't advise spending too much time ducking fire - if you're doing that, chances are good that Babylon 5 is taking your lumps for you, and its shields *don't* regenerate like yours do.

Eventually the Station Commander will realize that you need some help against the Shadows. You can earn new ships to replace the ones the Shadows destroy. If you do well enough, you will earn the right to fly White Star class vessels into combat. These have substantially better firepower and shields, and are the only thing strong enough to take out a Shadow Cruiser.

Full Screen Mode

Windows 95 users can press the 'F' key to toggle full screen mode on and off. When full screen mode is off, Shadow Wars will run in a window just like any other Windows 95 application.

This game will run in a window on Microsoft Windows 3.1 and Microsoft Windows for Workgroups 3.11 if the screen resolution is higher than 640x480.

The Boss Key

Pressing the 'B' key will minimize the game. In Microsoft Windows 3.1 or Microsoft Windows for Workgroups 3.11 you can double-click on the minimized game icon to bring the game back up to continue playing. In Microsoft Windows 95, just click on the minimized game on your tool bar to restore it. While minimized, the game will pause and wait for you to come back to it.

Hardware Requirements

BABYLON 5: SHADOW WARS will run on as little as a 486DX/66 with 8M RAM, running Microsoft Windows 3.1 or greater. The game runs best at a screen resolution of 640x480, but will run at higher resolutions if you need it to do so. A Soundblaster-compatible audio card is recommended for best game play but is not essential. Control is exclusively via arrow keys and space bar on the keyboard. Installation requires approximately 5 megabytes of space on your hard disk. The game cannot be run from floppies.

Tech Support

For phone tech support, call **(818) 878-0505** from 7:30 am to 6:00PM, PST.
Please try to situate yourself by the computer before calling - it will speed things up considerably!

For email tech support - **SSI@Cris.com**

Webpage address - **<http://www.cris.com/~Ssi>**

Uninstalling the B5 Arcade Entertainment Utility

IMPORTANT NOTE: Make sure you exit Personal Desktop before running the uninstall!

Win3.1X: The installation program will create an uninstall icon in the B5 program group. Should you desire to delete all of the B5 Entertainment Utility files, double click this icon.

Windows 95: Click on Start, Settings, Control Panel, Add-Remove Programs, and select "Babylon 5 Arcade Entertainment Utility" to uninstall.

Please note! If you have added additional media files to your Personal Desktop Media directories, the directories and additional files will be left intact in an uninstall, and will have to be deleted by the user. This is a safeguard to prevent the user from accidentally deleting personal media files from other sources which may have been placed in the Personal Desktop directories.

Wallpaper

The wallpaper tab functions similarly to the browser. Files in the left column can be double clicked to audition, and dragged from the left column to the right to place them in the wallpaper queue. Once files are dragged to the right column, you can right-click them to set display characteristics, including **stretched**, **centered**, **tiled**, **tiled and stretched**, and **make current wallpaper**.

